

**FINAL REPORT OF INVESTIGATION A&I E18479**

November 1, 2018

Employee Injury

*Adopted by the Washington Metrorail Safety Commission at its meeting on October 8, 2019.*

Washington Metrorail Safety Commission  
777 North Capitol Street, NE, Suite 402  
Washington, DC 20002



**FINAL REPORT OF INVESTIGATION A&I E18479****SMS 20181101#75442**

<b>Date of Event:</b>	November 1, 2018
<b>Type of Event:</b>	One or more injuries requiring medical transportation away from the event
<b>Incident Time:</b>	10:00 hrs.
<b>Location:</b>	New Carrollton Yard
<b>Time and How received by SAFE:</b>	11:30 hrs., SAFE On-Call Phone
<b>Safety Officer Response:</b>	None
<b>Time of Safety Officer Arrival:</b>	N/A
<b>Time of Safety Officer Departure:</b>	N/A
<b>Train Consist:</b>	N/A
<b>Injuries:</b>	Injury "Fracture" to left wrist
<b>Damage:</b>	N/A
<b>Emergency Responders:</b>	TRST

**Executive Summary**

On Thursday, November 1, 2018 at approximately 10:00 hrs., SAFE received notification of an employee injury at New Carrollton Yard. A Track and Structure (TRST) employee was tasked with removing trash from the flat of Prime Mover (PM)-39 using a Swingmaster with a fork attachment. Based on Closed Circuit Television (CCTV) footage, the TRST employee placed the trash container on top of the dumpster and climbed up to remove the contents by hand. Subsequently, when the employee was climbing down, he lost his footing, and fell injuring his left wrist. Further investigation revealed, the step ladder rungs on the dumpster were damaged (bent/partially broken) prior to the event. Warning labels illustrating falling hazard were affixed to the dumpster facing the direction of employee utilizing dumpster emphasizing Do Not Climb.

As a result of not following posted signage on the container, the employee fell from the top of the container while descending, sustained an injury to the left wrist and subsequently transported to Doctors Hospital where it was later determined by physicians to be a fracture.

TRST created a "Memorandum" for this event, emphasizing to employees the hazards of standing on top of the dumpster container. SAFE is also creating a Job Hazard Analysis

(JHA) for TRST on the procedures of dumping trash and debris from the work flats into the dumpster.

### **Notification**

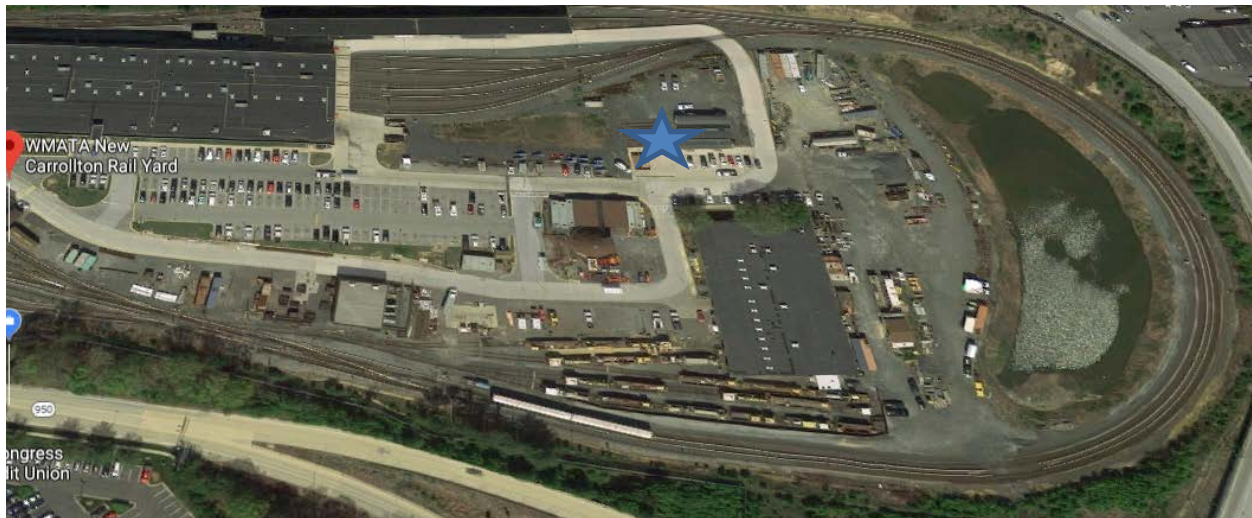
Title	Time	Comment:
FTA	11:37 hrs.	Email sent
TOC	11:37 hrs.	Email sent

### **Incident Site**

New Carrollton Yard, Designated Trash Container Location

- Flat, Dry cement surface

### **Field Sketch/Schematics**



### **Investigation**

On Thursday, November 1, 2018 at approximately 10:00 hrs., a Track and Structures (TRST) employee assigned to New Carrollton Yard was injured while dumping trash into a dumpster located at yard. The employee was removing trash from the flat of Prime Mover (PM)-39 with a Swingmaster with a fork attachment. The employee placed the trash container on top of the dumpster and climbed up to remove the contents by hand.

Subsequently, when the employee was climbing down, he lost his footing, and fell injuring his left wrist. Further investigation revealed, the step ladder rungs on the dumpster were

damaged prior to the incident. The damaged ladder rungs served for poor footing climbing on and off the dumpster. However, the dumpster's ladder is intended for inspection purposes only not to climb on the container notated on the fall hazard sign on the container.

TRST created a "Memorandum" for this event, emphasizing to employees the hazards of standing on top of the dumpster container. SAFE is also creating a JHA for TRST on the procedures of dumping trash and debris from the work flats into the dumpster.

The employee was transported to Doctors Hospital for further examinations. Examinations revealed that the employee suffered a fracture in his left wrist as a result of this event.

### **Findings**

- TRST employee was removing trash from flat of PM-39 using a Swingmaster
- The employee climbed on top of the dumpster to remove the trash. **Note:** Warning labels illustrating falling hazard were affixed to the dumpster facing the direction of employee utilizing dumpster
- When the employee was climbing down, he lost his footing and fell injuring his wrist
- The dumpster had a damaged step ladder and rungs
- Further evaluation determined the employee suffered a fracture to his wrist

### **Weather**

At the time of the incident, the temperature was 55 degrees Fahrenheit and clear. SAFE has determined that weather was not a factor in this incident. (Source: National Oceanic Atmospheric Administration (NOAA) for Landover, MD).

### **Immediate Mitigation to Prevent Re-Occurrence**

- The employee was transported for medical attention
- The dumpster was removed and replaced with a container in good condition.

## **Conclusion**

Based on the salient facts, the employee climbed on top of the dumpster to remove contents from a container. As he descended from the dumpster, he lost his balance and fell to the ground fracturing his wrist. The step ladder rungs on the dumpster was damaged (See photo 5). The damaged ladder rungs served for poor footing climbing on and off the dumpster. However, the dumpster's ladder is intended for inspection purposes only not to climb on the container (See photo 6). The container was removed and replaced with an undamaged container. TRST created a "Memorandum" on this incident (see attachment 2), letting employees know the hazards of standing on top of the dumpster container. SAFE is also creating a JHA for TRST on the procedures of dumping trash and debris from the work flats into the dumpster (see attachment 2).

SAFE has no further actions on this matter and recommends E18479 for closure.

## **Corrective Actions**

1. TRST created a "Memorandum" on this incident, letting employees know not to stand on top of the dumpster and all the hazards associated with it (See Attachment 2)
2. SAFE supported TRST in developing a JHA on the procedures of dumping trash and debris from the work flats into the dumpster (See Attachment 1)

## Photos



Photo 1 – Employee standing on top of the container



Photo 2 - Employee stepping down



Photo 3 – Employee losing his footing





Photo 4 – Employee falling to the ground



Photo 5 - Warning Label on container reflects the same language as illustrated on Illustration 1





Photo 6 – Caution sticker

## Attachments

Job Hazard Analysis: TRST Debris Disposal from TUV to Roll-Off Dumpster					
Completed By: (Name and Title)		Date Prepared		Supervisor Signature	
Job Step	Potential Hazards	Hazard Control	Required PPE		
5 Roll operation, shut down equipment.	<b>Strain, Sprain, Overexertion</b> Posture Force Reps <b>Slip, Trip, Fall</b> Breakdown/Ladder/Trains Surface elevation change Contamination/Spills Housekeeping Poor lighting Tripping hazards/voids <b>Struck by, against</b> Moving/Rolling Objects Flying Objects/Projectiles Overhead Hazards Other Hazards/Comments Slip, Trip, Fall: Loose debris or material outside of dumpster Struck by, against: Parking PNT	<b>Caught in, between</b> Crush/Pinch Engaged Parts Rotating Equipment <b>Contact</b> Cuts/Burns/Scorches Electrical/Third Rail Tool/Equipment Use <b>Exposure</b> Chemical Use Flammable Fuel Use Confined Space Weather Heat/Cold Stress Inhalation Hazard Noise Exposure	<b>Strain, Sprain, Overexertion</b> Caught in, between <b>Slip, Trip, Fall</b> Follow decontamination procedures <b>Struck by, against</b> Loose equipment, moving parts, etc. or lost tools Other Hazards/Comments	<b>Caught in, between</b> <b>Contact</b> <b>Exposure</b> <b>Third Rail Power Outage</b>	Safety Harness (ANSI 114.1) High Visibility Safety Vest Eyewear, Safety (ANSI Z87.1) Hard Hat (ANSI Z89.1) Other → Other PPE/Comments →
6	<b>Strain, Sprain, Overexertion</b> Posture Force Reps <b>Slip, Trip, Fall</b> Breakdown/Ladder/Trains Surface elevation change Contamination/Spills Housekeeping Poor lighting Tripping hazards/voids <b>Struck by, against</b> Moving/Rolling Objects Flying Objects/Projectiles Overhead Hazards Other Hazards/Comments Strain, Sprain, Overexertion: Slip, Trip, Fall: Struck by, against: Caught in, between: Contact: Exposure:	<b>Caught in, between</b> Crush/Pinch Engaged Parts Rotating Equipment <b>Contact</b> Cuts/Burns/Scorches Electrical/Third Rail Tool/Equipment Use <b>Exposure</b> Chemical Use Flammable Fuel Use Confined Space Weather Heat/Cold Stress Inhalation Hazard Noise Exposure	<b>Strain, Sprain, Overexertion</b> Caught in, between <b>Slip, Trip, Fall</b> <b>Struck by, against</b> <b>Third Rail Power Outage</b> Other Hazards/Comments Strain, Sprain, Overexertion: Slip, Trip, Fall: Struck by, against: Caught in, between: Contact: Exposure:	<b>Caught in, between</b> <b>Contact</b> <b>Exposure</b> <b>Third Rail Power Outage</b> Other → Other PPE/Comments →	Other → Other PPE/Comments →

Attachment 1 – Job Hazard Analysis page 1 of 1

# M E M O R A N D U M



SUBJECT: D99 Employee Injury

DATE: 4-8-2019

FROM: [REDACTED]

TO: D99-New Carrollton Supervision & L689 Employees Direct Reports

On Thursday, November 1, 2018 at approximately 10:00 hrs, a Track and Structures (TRST) employee assigned to New Carrollton Yard (D99) was injured while dumping trash into a dumpster located at D99. The employee was removing trash from the flat of Prime Mover (PM)-39 with a Swing Master with an attachment. The employee placed the trash container on top of the dumpster and climbed up to remove the contents by hand. Subsequently, when the employee was climbing down, he lost his footing and fell injuring his left wrist. Investigation revealed that the step ladder rungs of the dumpster was damaged prior to the incident.

## Hazards associated:

Climbing on the dumpster

Loading the dumpster

Ladder is not intended to climb on and off of the dumpster, it's in place as a step to see the level and load of the dumpster

Defective dumpsters/rungs need to be reported

Washington  
Metropolitan Area  
Transit Authority

Attachment 2 – Memo Regarding Hazards Related to Incident page 1 of 1