



Inspection Form

Form WMSC-IR-1

Washington Metrorail Safety Commission

Agency/Department Information

Inspection Date	YYYY 2019	MM 10	DD 04	Report Number	20191004-WMSC-MAL-1		
Rail Agency Name	Washington Metropolitan Area Transit Authority			Rail Agency Department	CTEM	Sub- Department	New Carrollton Yard
Rail Agency Department Contact Information	Name		Email		Office Phone		Mobile Phone
	██████████		██████████		██████████		██████████
	██████████		██████████		██████████		██████████
Inspection Location	New Carrollton CTEM Shop - Railyard D99 4300 Garden City Dr Hyattsville, MD 20785						

Inspection Summary

Inspection Activity #	1	2	3	4	5	6
Activity Code	VM-WI-PI					
Inspection Units	1					
Inspection Subunits	1					
Defects (Number)	0					
Recommended Finding	No					
Remedial Action Required¹	No					
Recommended Reinspection	No					

Activity Summaries

Inspection Activity #	1	Inspection Subject	Shop / Yard Inspection Observation				Activity Code		VM	WI	PI
Job Briefing Employee Name/Title	WMATA Inspection			Accompanied Inspector?	Yes	Out Brief Conducted	Yes	Time	08:00-11:00	Outside Shift	No
Related Reports	N/A			Related CAPS / Findings		TOC-COL-15-003-A					
Related Rules, SOPs, Standards, or Other	Ref		Rule or SOP		Standard		Other / Title		Checklist Reference		
	MetroRail Safety Rules and Procedures Handbook (MSRPH). Section 4– Safety Rules		FTA Safety Directive 16-2								
Inspection Location	Main Track	Yard	Station	OCC	RTA Facility	WMSC Office	Track Type	At-grade	Tunnel	Elevated	N/A
		X									X
Line(s)	D99		Track Number	N/A	Chain Marker and/or Station(s)		From		To		
Vehicles	Head Car Number		Number of Cars		Equipment		N/A		N/A		



Inspection Form

Form WMSC-IR-1

Washington Metrorail Safety Commission

	N/A	N/A			
Description	<p>WMSC Inspector conducted a Rules Compliance observation at the CTEM Shop, Yard, and equipment at New Carrollton. The inspector observed activities at the CTEM Shop for compliance with the Metrorail Safety Rules and Procedures Handbook (MSRPH), including Periodic Inspections (PI) activities, special tools and calibration procedures. WMSC inspector observed status of Corrective Action Plans (CAPs). Received good support from CTEM's staff. The following observations were noted:</p> <p>General Information:</p> <ul style="list-style-type: none"> Met with the CTEM Superintendent, CTEM Assistant Superintendent, and CTEM engineer. See attachment 1, CTEM Organizational Structure. New Carrollton shop takes care of small and handheld equipment, flat cars, and some heavy equipment. CTEM management uses team building management practices to promote and introduce their staff. Management first introduces the employee by name, title, and then by stating the employee's important role (i.e. employee manages the maintenance of handheld equipment), which brings a smile to the employee, then he asks him a specific question. <p>Specific Observations:</p> <ul style="list-style-type: none"> The lighting inside the CTEM shop in New Carrollton was recently upgraded with LED lights. The lighting outside the CTEM shop's apron is poor and needs to be upgraded. See attached Photo 1. There are no open pits at the New Carrollton CTEM shop. CTEM equipment was properly secured and blue flag protection was in place. CTEM personnel are certified to operate all CTEM equipment within the yard limits (not on the mainline). CTEM operator's license needs to be renewed once a year. CTEM management is implementing a new initiative to install transponders in all CTEM equipment so that the equipment can be easily located anywhere on the mainline, especially when they break down. See attached Photo 2. CTEM electrical power units are loose, damaged, and create trip hazards. PLANT is working with CTEM to replace these floor mounted electrical power units with roof mounted electrical power conduits. See attached Photo 3. A missing curtain barrier from the hot works area, which was noted as a deficiency during the last WMSC inspection, was installed. See attached photo 4. Hazardous material labels have been added to storage cabinets to inform personnel of storage methods of hazardous materials. NFPA 704 labels have been added to the outside of the cabinet to inform personnel of the hazard level. See attached photo 5. Fire extinguisher inspection labels were missing from some fire extinguishers. See attached photos 6 and 7. Drip trays were provided under oil and fuel containers. White tags were placed on small equipment requiring repairs and green tags were added on small equipment once they have been repaired. Preventive maintenance manuals are available for all equipment CTEM maintains. See attached photo 8. CTEM personnel uses part of the day on Fridays as a day to clean up shop spaces and yard from debris, trash, and weeds. CTEM's staff has implemented a process to enter, review, and request closure of Maximo Work Orders from remote locations. <p>WMSC Inspector did not note any new CMNT compliance defects.</p>			Number of Defects	0
				Recommended Finding?	No
				Remedial Action Required?	No
				Recommended Reinspection?	No



Inspection Form

Form WMSC-IR-1

Washington Metrorail Safety Commission

Remedial Action	N/A		
Effective Practices	<p>Effective Practices</p> <ul style="list-style-type: none">• CTEM management uses team building management practices to promote and introduce their staff. Management first introduces the employee by name, then by stating the employee's important role (i.e. employee is in charge of managing the maintenance of handheld equipment), which brings a smile to the employee, then he asks him the specific question.• CTEM personnel uses part of the day on Fridays as a day to clean up the yard from debris, trash, and weeds.		

Photos:

Photo 1 – The lighting outside the CTEM shop apron is poor





Inspection Form

Form WMSC-IR-1

Washington Metrorail Safety Commission

Photo 2 – CTEM management is installing transponders in all their equipment





Inspection Form

Form WMSC-IR-1

Washington Metrorail Safety Commission

Photo 3 – CTEM floor electrical power units are loose, damaged, and create trip hazards

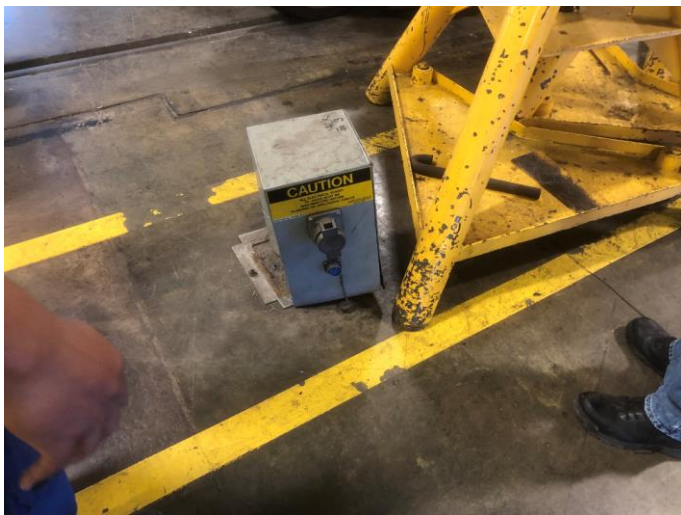


Photo 4 – A missing curtain barrier from the hot works area was installed





Inspection Form

Form WMSC-IR-1

Washington Metrorail Safety Commission

Photo 5 – Hazardous material labels have been added to storage cabinets



Photos 6 and 7 – Fire extinguisher inspection labels were missing from some fire extinguishers



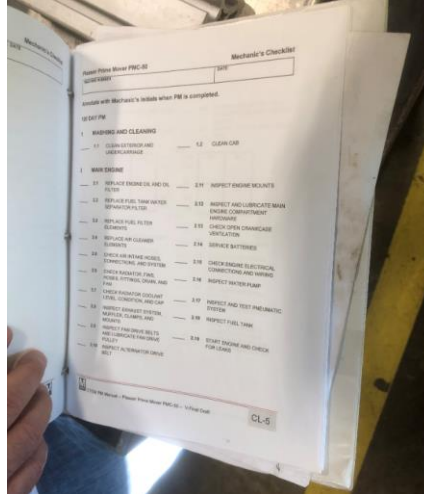


Inspection Form

Form WMSC-IR-1

Washington Metrorail Safety Commission

Photo 8 – Preventive maintenance manuals are available for each piece of CTEM equipment



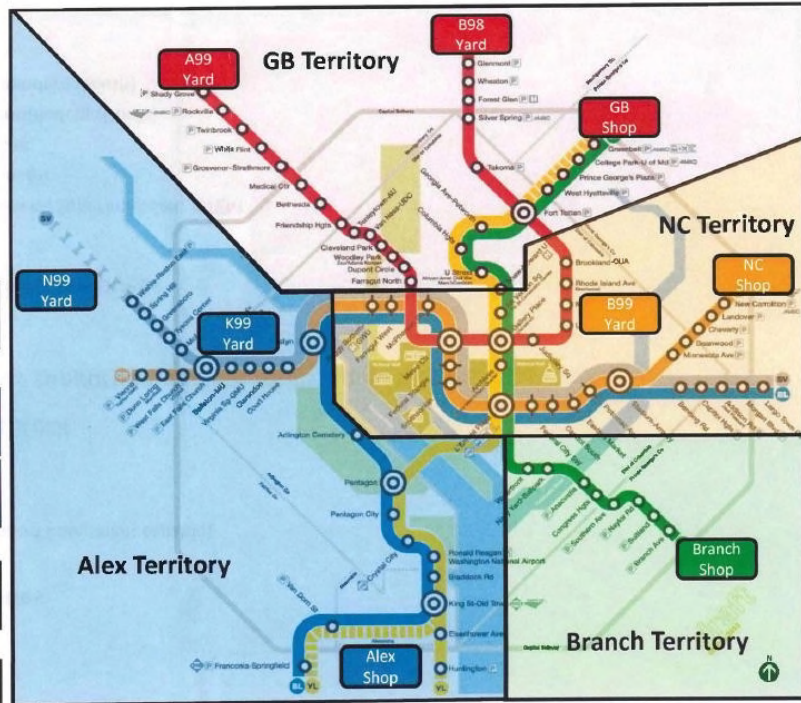
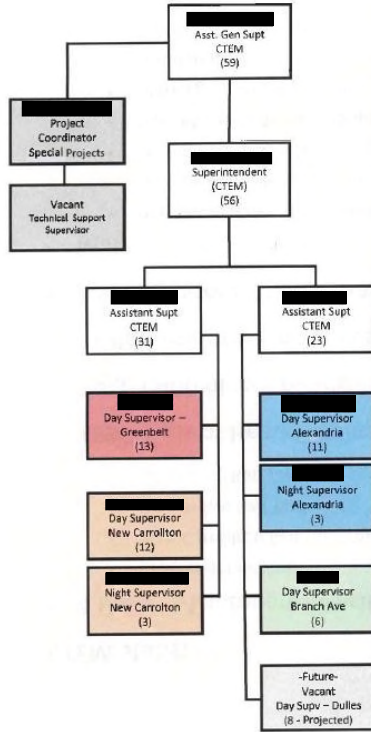


Inspection Form

Form WMSC-IR-1

Washington Metrorail Safety Commission

Attachment 1 – Car Track Equipment Maintenance Organizational Structure



¹ The rail transit agency must provide WMSC with the necessary evidence (e.g. maintenance work order system records, photos, documentation, records, data, or other evidence) to close out the Remedial Action. Closeout of Remedial Actions may also be subject to ongoing WMSC verification inspections to ensure corrections are sufficient and effective.

Inspector in Charge – Signature Manuel Lopez		Date 10/4/2019
Inspector in Charge – Name Manuel Lopez	Inspection Team Manuel Lopez and Bruce Walker	