

WASHINGTON METRORAIL SAFETY COMMISSION

SAFETY OBSERVATION REPORT

Location: Carmen Turner Facility (CTF)

Date: Wednesday, January 22, 2020

Time Period: 3:00pm – 7:00pm

OBSERVER – KEMMERY KENDRICK – TRAIN CONTROL AND SIGNALS SUBJECT MATTER EXPERT

- Observation performed during second shift, to observe the PMI schedule.
 - All operators on duty appeared fit-for-duty with no physical signs fatigue.
 - Electronic device policies followed by all ROCC staff. All devices are stored in lockers at beginning of shift.
-

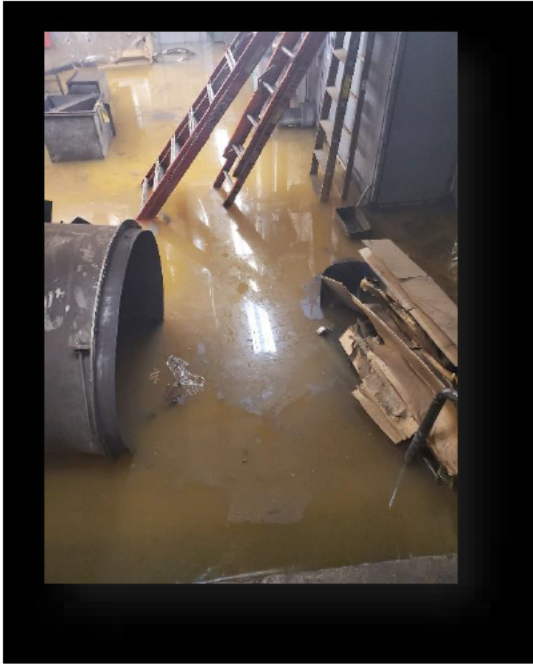
- Car Maintenance Supervisors
 - Complain that work consoles in proximity with Power consoles. Radio transmissions overlap. Need more space between the two (2) stations for clarity.
-

ROIC Section

- Monitored emergency – 1706 (pm)
 - Customer fell off platform on to ROW. Observed playback at ROIC station monitor. Customer was not watching his footing and walked off platform landing onto the South Rail.
 - SOP followed by ROIC
 - Train approaching station – train stopped and self-reported
 - Station manager contacted
 - Emergency medical notified

MOC Section

- Pentagon Station
 - Mechanical Room #103 – Flooded. Watermain break from November 2019. Residual water from that occurrence.



- Three (3) new hires – observing controllers waiting for class to start soon
- One (1) student controller qualifying upstairs this shift

SHIFT SUPERVISORS

██████████ ROIC Superintendent
██████████ ROCC Mainline Controller – Assistant Superintendent
██████████ Car Maintenance – Supervisor
██████████ Car Maintenance – Supervisor
██████████ MOC – Assist Superintendent
██████████ Track & Structures Supervisor
██████████ Power Supervisor
██████████ - Fire Liaison
██████████ OEM

