



WMSC Inspection Report 20250228

ISSUED 3/3/2025

Inspection Details

Title: Station Emergency Egress Routes and Areas of Refuge

Location: Green Line, F01 to E08

Date of Inspection: 2/28/2025

Time of Inspection: 7:45am to 12:00pm

Unannounced

Risk-Based (CAP TOC-EGR15-002-A, CAP C-0295)

Functional Area: Life Safety, Stations

Hazard Rating: 1D

Overview

On Friday February 28, 2025, WMSC inspectors conducted a risk-based inspection to verify whether station egress routes and areas of refuge were clear of obstructions. The inspection focused on visually confirming whether emergency egress routes such as landings and areas of rescue/areas of refuge are clear of obstructions caused by debris and equipment. Blocked egress routes decrease the probability of survival during an emergency.

There have been multiple corrective action plans related to obstructed egress pathways and areas of rescue starting with Federal Transit Administration CAP, TOC-EGR-15-002-A that was issued by [FTA Safety Directive 16-2](#) on December 15, 2015, during the period of Federal WMATA Safety Oversight (FWSO). WMSC became certified as the state safety oversight agency for WMATA on March 18, 2019, and as part of that certification, the WMSC assumed oversight of the remaining open CAPs that were, up to that point, being overseen by the FTA. On May 15, 2020, the WMSC closed TOC-EGR-15-002-A.

On March 22, 2022, the WMSC issued C-0172 (finding 11 of the [2022 Emergency Management and Fire and Life Safety Programs Audit](#)); however, C-0172 was focused on safe egress in tunnels and areas of the underground portions of the roadway. The WMSC closed C-0172 on May 19, 2023. This inspection did not enter the underground portions of the roadway and therefore does not assess the durability of C-0172's safety improvements.

On January 29, 2025, the WMSC issued C-0295 ([finding 3 of the 2025 Emergency Management and Life Safety Programs Audit](#)) based, in part, on audit observations that identified some emergency



egress routes in stations were blocked by debris and areas of rescue/refuge were being used as storage. While C-0295 is in development, the WMSC is conducting a series of inspections, starting with this inspection, to identify and—have Metrorail mitigate—similar conditions in the interim.

Defects and Corrective Actions

WMSC Inspections identify safety issues that may be classified as defects, findings, or recommendations. Findings and recommendations are defined by Program Standard Section 5.E.2 and 5.E.3 respectively. Ordinarily, issues identified in a WMSC inspection report are classified as defects. Defects are specific safety issues of non-conformance/non-compliance that are identified and that require remedial action. This inspection did not identify any findings or recommendations and therefore does not require a WMSC Corrective Action Plan in accordance with Program Standard Section 5.E.4.

Defect Observations and Determinations

A total of nine Metrorail stations were inspected on the Green Line (includes part of the Yellow Line) starting at Gallery Place (F01) and ending at Hyattsville Crossing (E08). At the following four stations, no egress defects were observed at the time of this inspection:

- Gallery Place (F01)
- Mt. Vernon Sq (E01)
- West Hyattsville (E07)
- Hyattsville Crossing (E08)

At the other five stations that were inspected, the following defects were observed as noted below:

Defect 1

At Shaw-Howard U Station (E02), items are stored in front of emergency cabinet 200.

Hazard Rating: 4D

Photos





Defect 2

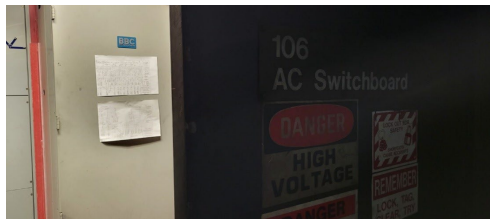
At U Street Station (E03) AC Switchboard room 106 was open.

During the inspection, this potentially hazardous condition was identified as an Immediate Safety Concern that was immediately conveyed to the Power Desk at the Maintenance Operations Center (MOC). The MOC told the inspectors they were sending a crew to mitigate the safety issue.

Additionally, WMSC notified WMATA of the Immediate Safety Concern again via email on Friday, February 28, 2025, in accordance with Program Standard Section 6.F.2.a. In response to the WMSC's email, WMATA emailed WMSC back on February 28, 2025, showing photographic evidence of the mitigated open U Street Station (E03) AC Switchboard room 106.

Hazard Rating: 1D

Photos



U St AC Room 106 open



U St AC Room 106 – Door Repaired (picture provided by Metrorail)

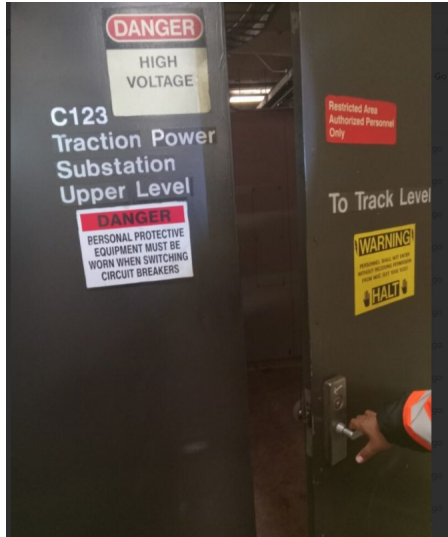


Defect 3

At Columbia Heights (E04), Traction Power room C123 was open and not secured. Door was closed and secured by WMSC inspectors.

Hazard Rating: 1E

Photos

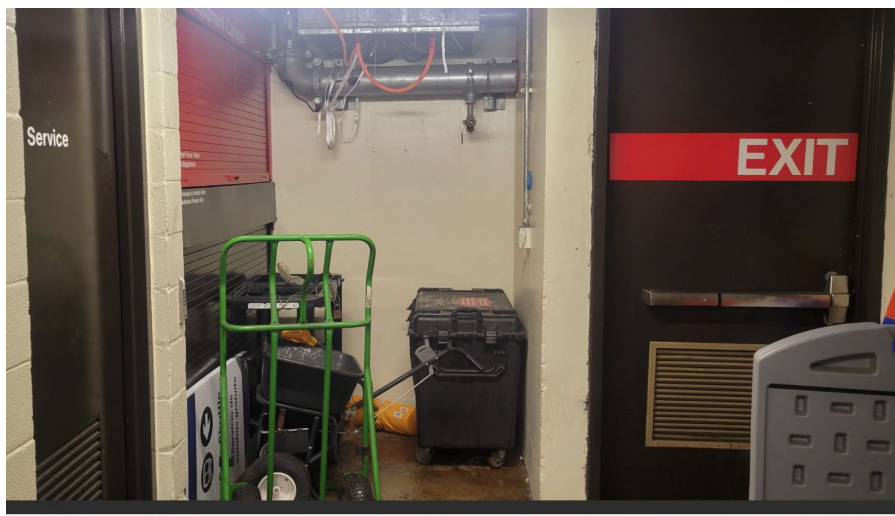


Defect 4

At Fort Totten (E06), emergency cabinet C104 was blocked. This was mitigated by the station manager.

Hazard Rating: 2E

Photos



Cabinet C104 was blocked



Fort Totten emergency Cabinet C104 corrected by Station Manager

Defect 5

Georgia Ave-Petworth (E05), Area of Rescue #3 has a sign stating that storage is not permitted, but gates are stored that require immediate removal.

Hazard Rating: 2D

Photos



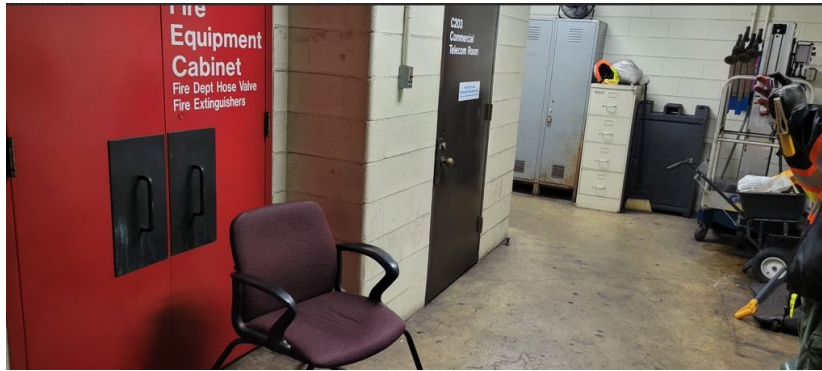
Defect 6

Georgia Ave-Petworth (E05), fire equipment cabinet C201 has chair obstructing door. Chair removed by WMSC inspectors. Other Items still require immediate removal by Metrorail.

Hazard Rating: 3D



Photo



Defect 7

At George Ave-Petworth (E05), toaster oven and microwave plugged into a power strip and not directly plugged into an outlet.

Hazard: 2D

Photos



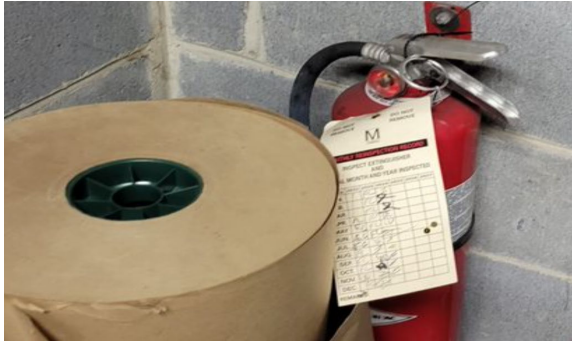
Defect 8

At Georgia Ave-Petworth (E05), the fire extinguisher in the room with the toaster oven is past due for inspection and was last inspected in November 2024. Items are stored in front of and block access to this fire extinguisher.

Hazard Rating: 2D



Photo

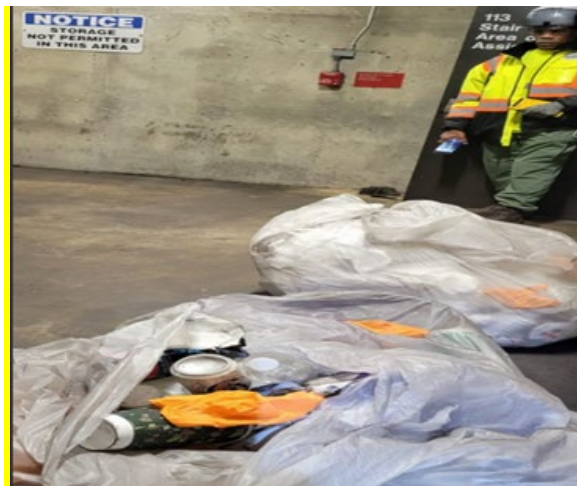


Defect 9

At Georgia Ave-Petworth (E05), area of assistance room 113 has trash bags stored. Room 113 is labeled with a sign stating, "storage not permitted in this area".

Hazard Rating: 2D

Photo



Defect 10

At Georgia Ave-Petworth (E05), Track 2 outbound area of rescue #2 has water and mud intrusion problems. The slippery mud and water create hazardous conditions in the event of an emergency

Hazard Rating: 1E



Photo



Defect 11

At Georgia Ave-Petworth (E05), exit stairs with lights not functioning (five of the first eight lights).

Hazard Rating: 1E

Photo





Next Steps

Please respond by **Thursday, March 6, 2025**, to acknowledge receipt and to convey responses to the WMSC regarding what, if any, actions will be or have been taken in response.

The WMSC recognizes that corrective action plan C-0295 is presently in development. As of the date of this raw observation report, the WMSC has not yet seen the first draft of CAP C-0295. WMATA is expected to submit that first draft by March 10, 2025 (extension granted from original deadline of February 28, 2025). Whether as part of C-0295 or independently, the WMSC expects WMATA to implement interim steps to address the types of defects identified by this inspection until the long-term solution embodied in C-0295 is implemented.