



WMSC Inspection Report 20251118

ISSUED 11/21/25

Inspection Details

Title: Greenbelt Yard (E99) and West Falls Church Yard (K99) S&I Shop Inspection

Location: Greenbelt Yard (E99), West Falls Church Yard (K99)

Date of Inspection: 11/14/25 and 11/18/2025

Time of Inspection: 11:30am to 2:15pm (Greenbelt Yard), 11:15am to 3:15pm (WFC Yard)

Unannounced

Non-Risk-Based

Functional Area: Roadway Worker Protection, Vehicles

Hazard Rating: 3B

Overview

On November 14, 2025, and November 18, 2025, WMSC Inspectors visited two Metrorail rail yards for an unannounced non-risk-based inspection of the overall condition of the yard and surrounding facilities. At Greenbelt Yard (E99), WMSC Inspectors observed the Service and Inspection (S&I) Shop, Building H, Car Maintenance (CMNT) railroad maintenance machines (RMM) storage, and the car cleaner room on the yard storage platform. At West Falls Church Yard (K99) (WFC), WMSC Inspectors observed the S&I Shop, the rail car storage platform areas, the yard control tower, and the RMM storage facilities. The car washes were not accessed as part of this inspection.

The goal of the inspections was to determine the overall state of the yards, shops, and buildings and each location's adherence to Metrorail's own policies and procedures. Upon arrival at both shop facilities, WMSC Inspectors were given a safety briefing.

After concluding the Greenbelt (E99) and West Falls Church Yard (K99) inspections, WMSC Inspectors conducted a debrief with each of the S&I Shop Supervisors respectively in accordance with Program Standard Section 6.F.1.

Defects and Corrective Actions

WMSC Inspections identify safety issues that may be classified as defects, findings, or recommendations. Findings and recommendations are defined by Program Standard Section 5.E.2 and 5.E.3 respectively. Ordinarily, issues identified in a WMSC inspection report are classified as



defects. Defects are specific safety issues of non-conformance/non-compliance that are identified and that require remedial action.

This inspection did not identify any findings or recommendations and therefore does not require a WMSC Corrective Action Plan in accordance with Program Standard Section 5.E.4.

Defect Observations and Determinations

Positive Practices

There were many positive practices noted at both Greenbelt (E99) and West Falls Church (K99).

Specifically, at Greenbelt Yard (E99) within the service and inspection shop building, rail cars that were on lifts all had wheel chocks as required. Additionally, blue flags were in use and properly placed. Trains with open doors had door guards (fall protection) secured. Safety posters and bulletins were highly visible on the walls and bulletin boards throughout the facility.

Similarly, in West Falls Church Yard (K99) WMSC Inspectors noted the shop's overall cleanliness and orderliness. Materials and shop equipment were stored neatly and methodically. Blue flag placement was inspected and found in accordance with Metrorail procedures.



Photo 1: Properly placed blue flags.

At West Falls Church Yard (K99) all fire extinguishers and eye washes were inspected and found they were inspected by Metrorail on time, logged, and expiration dates were within limits.



WASHINGTON METRORAIL SAFETY COMMISSION



Photo 2: Example of one WFC shop fire extinguisher inspected which was properly maintained and unexpired. All fire extinguishers inspected were found to be in this condition.

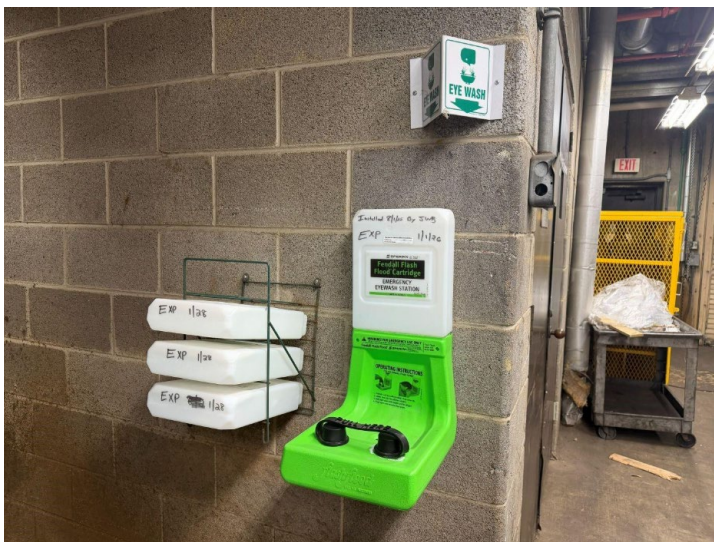


Photo 3: Similarly, all eye wash stations were actively maintained and did not have any expired materials or solutions.

All torque wrenches were inspected at West Falls Church (K99), and all found to have valid certification dates and were neatly housed in a tool crib. (A tool crib is a designated storage area that ensures tools and equipment are stored in a secure area. The tool crib consists of modular cabinets designed for heavy duty industrial storage.)



Photos:



Photo 4: Each inspected torque wrench.

All trains at West Falls Church (K99) within the shop either maintained closed doors or were equipped with door guards (fall protection). Railings on the platform side of the trains were also in place.



Photos:

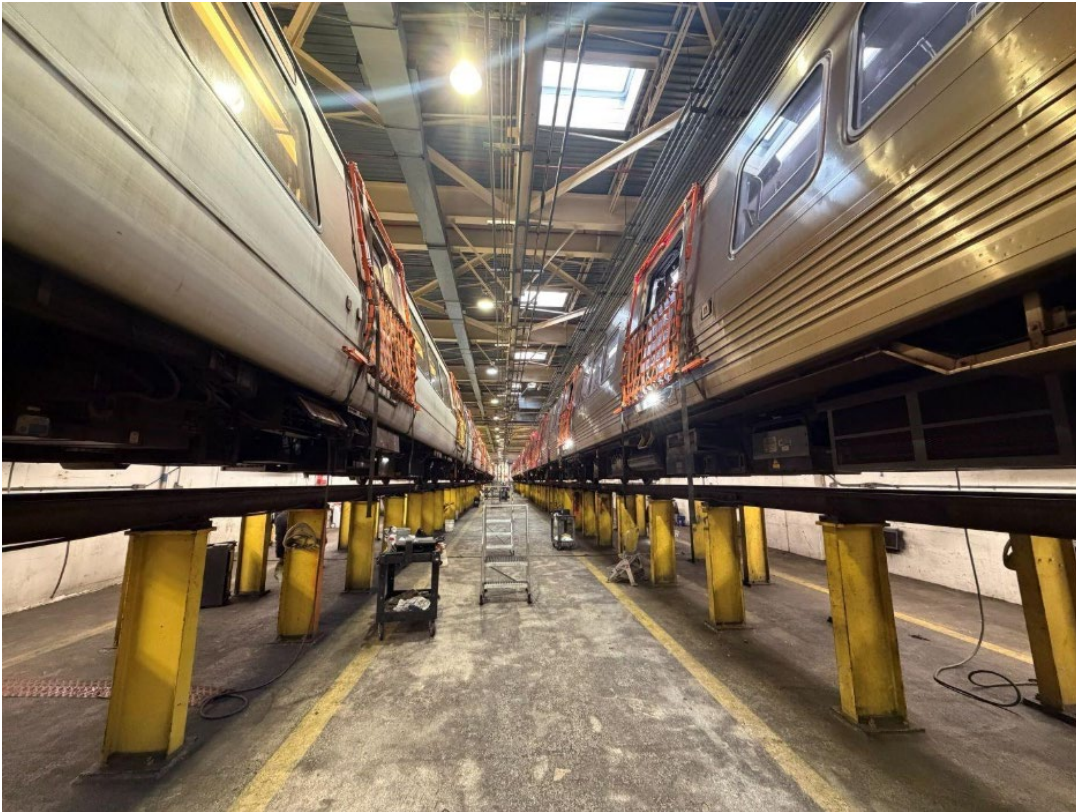


Photo 5:

Properly secured fall protection on raised vehicles.

Defect 1

At Greenbelt (E99), the Shop Auxiliary Power cables that were running along the floors between the shop's power boxes and the auxiliary power plug on the train were uncovered in many places. Covers of the exposed power cables are required to avoid damage from being stepped on or run over with various equipment. Inspectors noted that the majority of the cables were exposed, and covers were not properly or not installed to provide protection.

Metrorail Special Alert SA-22-L Revision 00 Date: 12/21/2022, identifies the hazard of uncovered high voltage cable wires and the proper usage of high voltage covers in shop conditions.

Hazard Rating: 3B



Photos:



Photo 6: Uncovered power cables at Greenbelt (E99).



Photo 7: Uncovered power cables at Greenbelt (E99).



Defect 2 (mitigated)

Similarly, at West Falls Church Yard (K99), auxiliary power cables, those that supply power to trains while in the shop, were inspected for use of high voltage covers. Positively, West Falls Church Yard (K99) shop cables were nearly all covered except for one area which was immediately mitigated with a high voltage cover while inspectors were onsite.

Metrorail Special Alert SA-22-L Revision 00 Date: 12/21/2022, identifies the hazard of uncovered high voltage cable wires and the proper usage of high voltage covers in shop conditions.

Hazard: 3B

Photos



Photo 8: Properly covered high voltage cables.

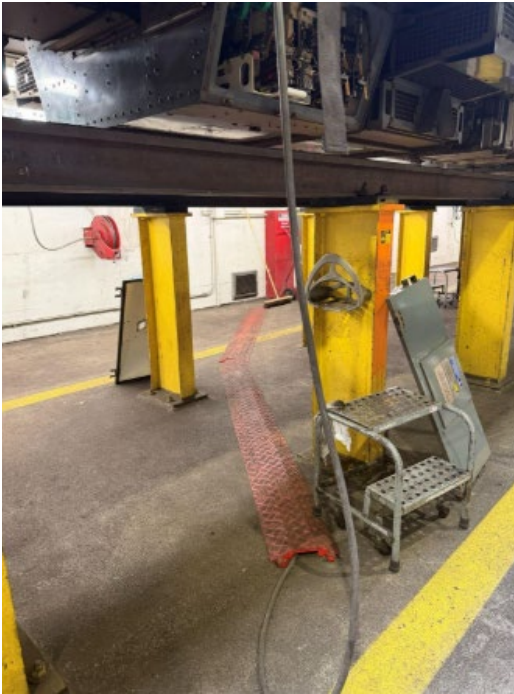


Photo 9: Properly covered high voltage cable wires.



Photo 10: The one area of exposed high voltage cable wires that were not covered but was mitigated onsite.

Defect 3 (mitigated)



At West Falls Church (K99), the basement of the building was inspected and found neat and orderly. One exit door was found to be propped open with a sliver of wood. WMSC Inspectors removed the prop, secured the door, and reported this as part of the inspection's debriefing.

Hazard Rating: 3B

Defect 4

The Greenbelt Yard (E99) exterior door into the S&I Shop was being propped open by using blue flags. The door should be in a closed and secure position.

Hazard Rating: 3B

Photos:



Photo 11: Propped exterior door at Greenbelt (E99).

Defect 5

At Greenbelt Yard (E99) the chemical Labeling Station was out of some chemical labels. Meaning, workers would be unable to print a corresponding chemical label explaining a hazard or warning pertaining to that chemical in circumstances when the station was out of a particular label.

Hazard Rating: 3B

Photos:



Photo 12: Chemical Labeling Station at Greenbelt Yard (E99).

Defect 6

At the Greenbelt Yard (E99) train storage platform, car cleaning chemicals are stored, which are hazardous should the solution come into contact with a worker's eyes. This location did not have an eye wash station that was easily accessible from that location. Car cleaning solutions come in at least three types, all of which can cause eye damage should the solution or wipe come into contact with the eyes.

Hazard Rating: 3B



Photos:



Photo 13: Hazardous cleaning chemicals at Greenbelt (E99) without a nearby eye wash station.





Photo 14: Hazardous cleaning chemicals at Greenbelt (E99) without a nearby eye wash station.

Observation 1

At West Falls Church (K99), WMSC Inspectors are concerned with the presented condition of some brake discs marked "NEW GOOD." See the photos below.

Photos



Photo 15: Brake discs marked "NEW GOOD;" however, the discs appear to be in poor condition.



Photo 16: Same brake discs from different angle marked as "NEW GOOD."

Next Steps

Please respond **by Monday, November 24, 2025**, to acknowledge receipt and to convey responses to the WMSC regarding what, if any, actions will be or have been taken in response.