



WMSC Inspection Report 20260113

ISSUED 1/16/2026

Inspection Details

Title: Metrorail Station Fire Life Safety Inspection – Green Line

Location: Archives Navy Memorial - Penn Quarter Station (F02) & Waterfront Station (F04)

Date of Inspection: 1/13/2026

Time of Inspection: 7:00am to 11:00am

Unannounced

Risk-Based (Corrective Action Plan - TOC-EGR15-002-A, CAP C-0295, WMSC-20220228)

Functional Area: Life Safety, Stations

Hazard Rating: 1D

Overview

On Tuesday January 13, 2026, WMSC inspectors conducted a risk-based inspection to verify station manager emergency equipment, station egress routes, and that areas of refuge were clear of obstructions. The inspection focused on visually confirming the presence of required station manager emergency equipment, emergency egress routes such as landings, and areas of rescue/areas of refuge are clear of obstructions, and the condition of fire cabinets and the included safety equipment.

This is a risk-based inspection based on multiple Federal Transit Administration (FTA) and WMSC findings requiring Metrorail corrective action plans (CAP) related to obstructed egress pathways and areas of rescue. Following its Safety Directive 16-2, issued on December 15, 2015, the FTA required Metrorail to complete corrective action plan CAP-TOC-EGR-15-002-A, during the period of FTA Safety Oversight of Metrorail. WMSC was certified as the designated state safety oversight agency for Metrorail on March 18, 2019, and following certification, the WMSC assumed safety oversight of the remaining open Metrorail CAPs that were, up to that point, overseen by the FTA. The WMSC oversaw the remaining action items of this CAP, and on May 15, 2020, the WMSC closed CAP TOC-EGR-15-002-A because the requirements of the CAP were met.

On January 29, 2025, the WMSC approved a Metrorail corrective action plan (C-0295), based on [finding 3 of the 2025 Emergency Management and Life Safety Programs Audit](#) which states:



“Metrorail fire and life safety inspections do not identify and resolve deficiencies with fire life safety equipment and assets within stations.”

On February 28, 2022, WMSC issued an inspection report on [Fire Life Safety and Emergency Trip Station \(ETS\) Inspection](#) between Rhode Island Avenue (B04) and Metro Center Stations (A01). The inspection identified non-operational and out of service Emergency Trip Station (ETS) locations in close proximity to the functioning ETS Boxes. The non-operational and out of service ETS Boxes should be removed to prevent confusion by personnel during an emergency.

On February 28, 2025, WMSC inspectors conducted a [risk-based inspection](#) to verify whether station egress routes and areas of refuge were clear of obstructions. The inspection identified obstructed fire equipment cabinets, improper use of surge protectors which create a fire hazard, and an unsecured high voltage room door.

On December 12, 2025, WMSC inspectors conducted a [risk-based inspection](#) to determine mitigation durability; that is whether the non-operational and out of service Emergency Trip Stations (ETS) locations in close proximity to the functioning ETS Boxes identified in the [February 22, 2022, report](#) were fixed. During the [December 12, 2025, Inspection](#) WMSC required that the non-operational and out of service ETS Boxes should be removed to prevent confusion by personnel during an emergency. The inspection found 11 defects, one of which was that at Farragut North (A02), non-operational ETS Boxes are located at each end of the station platform and are not secured. There is a temporary/insubstantial paper sign attached with grey duct tape stating, “out of service” on one of the discontinued ETS boxes. The discontinued/non-operational ETS boxes must be secured to prevent these from being mistaken for functioning ETS boxes and being accessed or relied upon during an emergency event.

During the January 13, 2026, inspection, the Archives Navy Memorial - Penn Quarter (F02), and Waterfront (F04) stations were inspected.

The Station Manager logbook was reviewed, and the following safety equipment was inspected at each station:

- Automated External Defibrillator (AED)
- First aid kit
- Trauma kit
- Fire extinguisher
- Emergency maps
- Bull horn
- Wireless microphone

After concluding the inspection, the WMSC Inspectors conducted a debrief with each Station Manager in accordance with Program Standard Section 6.F.1.



Defects and Corrective Actions

WMSC Inspections identify safety issues that may be classified as defects, findings, or recommendations. Findings and recommendations are defined by Program Standard Section 5.E.2 and 5.E.3, respectively. Ordinarily, issues identified in a WMSC inspection report are classified as defects. Defects are specific safety issues of non-conformance/non-compliance that are identified, and that require remedial action.

This inspection did not identify any findings or recommendations and therefore does not require a WMSC Corrective Action Plan in accordance with Program Standard Section 5.E.4.

Defect Observations and Determinations

Defect 1

At the Archives Navy Memorial – Penn Quarter (F02) and Waterfront (F04) stations, the station managers could not produce the bull horn, which is required equipment.

*A bull horn is a portable cone shaped device that amplifies and projects sound over long distances. This device may be necessary during emergency conditions to guide evacuations, direct search and rescue, and warn of danger.

Hazard Rating: 1D

Defect 2

At the Archives – Penn Quarter (F02) station, in the cleaner ejector room 105, the fire extinguisher is located on the floor and not properly installed. International Fire Code (IFC) 906.2 – Portable fire extinguishers shall be selected, installed, and maintained (In accordance with NFPA 10).

Hazard Rating: 1D

Photos

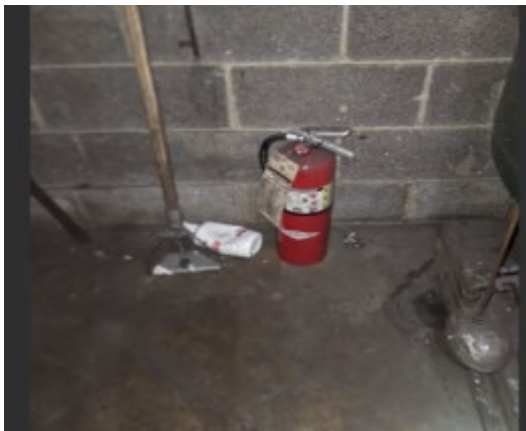


Photo 1: Portable fire extinguisher



Defect 3

At Archives Navy Memorial – Penn Quarter (F02), fire equipment cabinet 207 located in room 201 of the mezzanine level is being used to store a ladder. The fire equipment cabinet is to be used to store the required safety equipment.

Hazard Rating: 1D

Photos



Photo 2: Miscellaneous equipment stored in fire equipment cabinet 207.

Defect 4

At Archives Navy Memorial – Penn Quarter (F02) the mezzanine level room 201 miscellaneous equipment is stored near the exit door which creates a partially blocked condition. This exit door can be used by the public, first responders, and employees.

Hazard Rating: 1D



Photos



Photo 3: Partially blocked Exit door.

Defect 5

At the Archives Navy Memorial – Penn Quarter (F02) station, the mezzanine level room 201 (Maintenance Room), the backflow protection valve is noted as failing its inspection on May 29, 2023.

Backflow preventers serve as critical safety devices that protect the water supply from contamination. The specialized assemblies prevent contaminated water from flowing backward into clean water systems.

(IFC 912.6) - Backflow Protection: The potable water supply to sprinkler and standpipe systems shall be protected against backflow.

Hazard Rating: 1D



Photos



Photo 4: Failed Backflow Protection Valve.

Defect 6

At Archives Navy Memorial – Penn Quarter (F02) station, the mezzanine level room 201 (Maintenance Room), showed accumulated combustible waste materials and trash.

Hazard Rating: 1D

Photos



Photo 5: Stored combustible waste materials and trash which is a fire hazard.



Defect 7

At Archives Navy Memorial – Penn Quarter (F02) station, the platform level operations room 111 showed accumulated combustible waste materials and trash.

Hazard Rating: 1D

Photos



Photo 6(left) and photo 7 (right): Operations room 111 - Stored combustible waste materials and trash.

Defect 8

At Archives Navy Memorial – Penn Quarter (F02) station, in the platform level operations room 111- the portable fire extinguisher is past due for its monthly inspection. The last inspection was May 2025.

IFC 906.2 – Portable fire extinguishers shall be selected, installed, and maintained (In accordance with NFPA 10).

Hazard Rating: 1D



Photos



Photo 8 (left) and photo 9 (right): Fire extinguisher not mounted and past its monthly inspection.

Defect 9

At Archives Navy Memorial – Penn Quarter (F02) station, platform level Askarel¹ room 117 showed accumulated combustible waste materials and trash.

Additionally, IFC 906.2 – Portable fire extinguishers shall be selected, installed, and maintained (In accordance with NFPA 10).

Hazard Rating: 1D

Photos



Photo 10: Debris Blocking access to Room 117.

¹ Askarel is a trade name for a group of synthetic, non-flammable dielectric fluids, primarily mixtures of polychlorinated biphenyls (PCBs) and trichlorobenzene, historically used as coolant and insulator in electrical transformers and capacitors for fire safety.



Photo 11: Debris in room and fire extinguishers not mounted.

Defect 10

At Archives Navy Memorial – Penn Quarter (F02) station, located on the wall behind emergency exit VF3, vent shaft door # F22, is an open condition electrical outlet.

IFC 604.6 - Unapproved conditions.

Hazard Rating: 1D



Photos



Photos 12 (left) and 13 (right): Electrical outlet. Plus IFC 604.6 – Unapproved conditions.

Defect 11

At Archives Navy Memorial – Penn Quarter (F02) station, in mechanical equipment room 110, the fire extinguisher is located on the floor and is not installed and mounted.

IFC 906.2 – Portable fire extinguishers shall be selected, installed, and maintained (In accordance with NFPA 10).

Hazard Rating: 1D

Photos

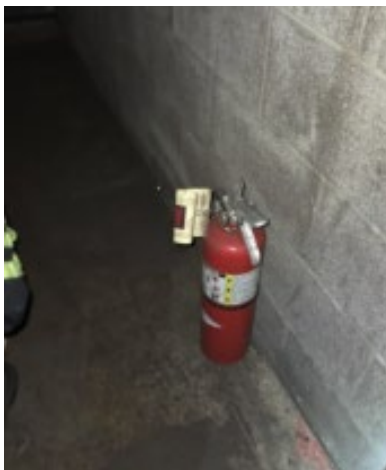


Photo 14: Fire extinguisher not mounted.



Defect 12

At Archives Navy Memorial – Penn Quarter (F02) station, the emergency exit route to the street is partially obstructed, which poses a safety risk in the event of evacuation for life safety. Additionally, miscellaneous items were stored underneath the emergency stairs.

IFC 315.3.2 - Combustible storage not permitted in exits, stairways, or ramps.

Hazard Rating: 1D

Photos



Photo 15: Combustible storage is not permitted in exits, stairways, or ramps.

Defect 13

At Waterfront station (F04), in room 106 to the upper west hall, the exit to the street and Emergency Transport Equipment Cart (ETEC) cart are partially obstructed due to an open ladder and items being stored which poses a safety risk in the event of evacuation for life safety. An ETEC cart is a folding platform with wheels designed for the transportation of patients and equipment.

Hazard Rating: 1D



Photos

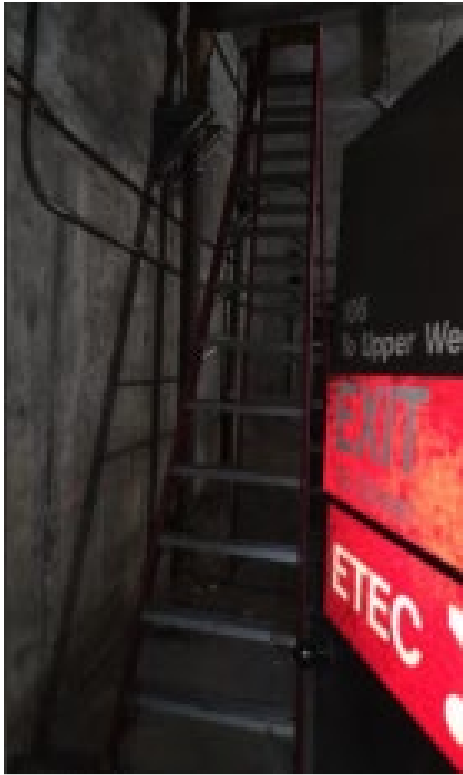


Photo 16: Door 106 - Partially block exit to street.

Defect 14

At Waterfront station (F04), the AC switchboard room 202 was not secured allowing access to an area of high voltage. Metrorail identified this area as requiring specialized Personal Protective Equipment (PPE) due to the electrical hazard. In addition, signage on the door states that personnel shall not enter without permission from the Maintenance Operation Center (MOC). Before leaving, the WMSC ensured that the door was properly closed and secured.

Hazard Rating: 1D



Photos



Photos 17 (left) and 18 (right): Open door to high voltage AC Switchboard Room 202, room closed and secured by the WMSC.

Defect 15

At Waterfront station (F04), fire extinguishers in equipment cabinet 100 are past due for their monthly inspection.

(110 IFC 906.2) Portable fire extinguishers shall be selected, installed, and maintained (In accordance with NFPA 10).

Hazard Rating: 1D

Photos



Photos 19 (left) and 20 (right): The cabinet with the expired fire extinguishers. The past due extinguishers themselves.



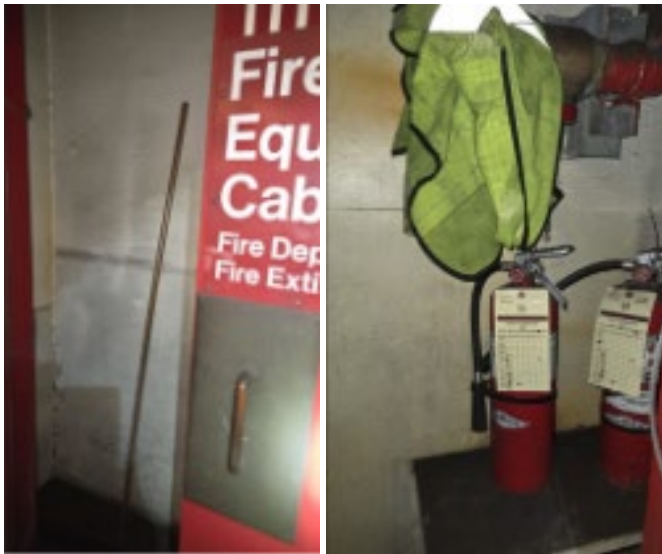
Defect 16

At Waterfront station (F04), inspectors noted improper storage of a broom and vest in fire equipment cabinet 111. Two fire extinguishers are also past due for their monthly inspection.

(110 IFC 906.2) Portable fire extinguishers shall be selected, installed, and maintained (In accordance with NFPA 10).

Hazard Rating: 1D

Photos



Photos 21 (left) and 22 (right): The cabinet with the defects and the extinguishers.

Defect 17

At Waterfront station (F04), in operations room 105, the portable fire extinguisher is past its monthly inspection. The last inspection was May 2025.

(110 IFC 906.2) Portable fire extinguishers shall be selected, installed, and maintained (In accordance with NFPA 10).

Hazard Rating: 1D



Photos



Photo 23: Portable fire extinguisher.

Defect 18

At Waterfront station (F04), in room 207, which leads to lower-level service rooms exit to the track level, the portable fire extinguisher is past due for its monthly inspection.

(110 IFC 906.2) Portable fire extinguishers shall be selected, installed, and maintained (In accordance with NFPA 10).

Hazard Rating: 1D

Photos



Photo 24: Portable fire extinguisher.



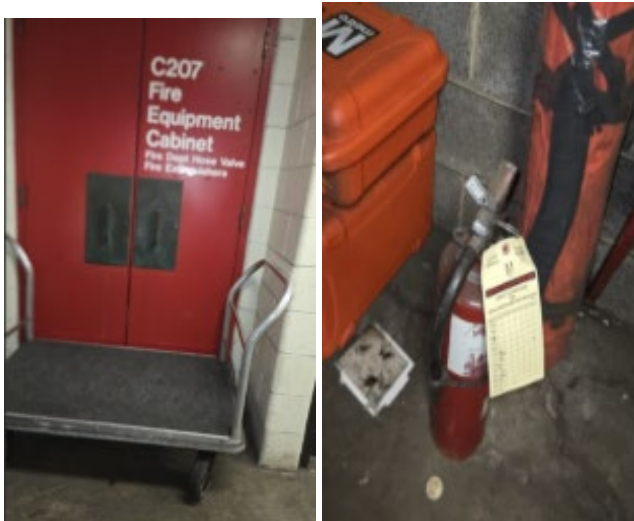
Defect 19

At Waterfront station (F04), in room C202 to the equipment cabinet, fire equipment cabinet C207 was blocked by a cart, restricting access to the emergency equipment. The WMSC mitigated the obstruction by moving the cart. However, a hazard remained since access to the customers' restroom and other rooms are now partially obstructed by the new location of the cart. The emergency cabinet contained three fire extinguishers; one of the three extinguishers was past due for an inspection.

Portable fire extinguishers shall be selected, installed, and maintained (In accordance with NFPA 10).

Hazard Rating: 1D

Photos



Photos 25 (left) and 26 (right): Cart blocking access and portable fire extinguishers due for inspection.

Defect 20

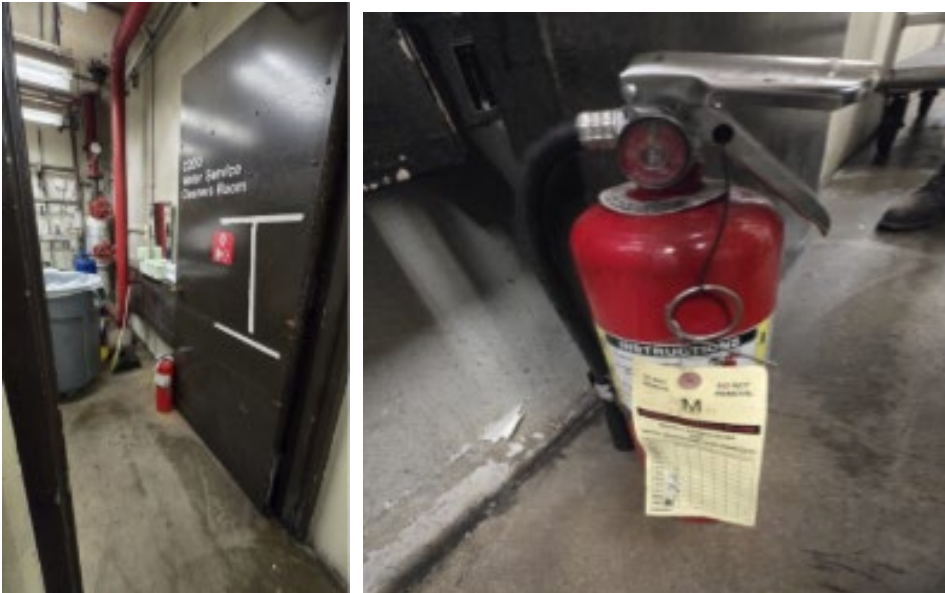
At Waterfront station (F04), in room C200 water service cleaning room, a fire extinguisher is being used as a doorstop. Additionally, the fire extinguisher is past due for its monthly inspection, and the fire extinguisher had the safety pin pulled.

(110 IFC 906.2) Portable fire extinguishers shall be selected, installed, and maintained (In accordance with NFPA 10).

Hazard Rating: 1D



Photos



Photos 27 (left) and 28 (right): Portable fire extinguisher on floor. The safety pin has been removed.

Defect 21

At Waterfront station (F04), in room C206, the mechanical equipment room, the fire extinguisher is not properly mounted and is stored on the floor to be used as a doorstop.

Portable fire extinguishers shall be selected, installed, and maintained (In accordance with NFPA 10).

Hazard Rating: 1D

Photos



Photos 29 (left) and 30 (right): Portable fire extinguisher on floor.



Defect 22

At Waterfront station (F04), in room C206 mechanical equipment room, appliances are not directly plugged into the wall outlet, creating a fire hazard, per IFC 603.6.

Hazard Rating: 1D

Photos



Photo 31: Appliances not directly plugged into the wall outlet.

Defect 23

At Waterfront station (F04), standpipes located in the exterior of Waterfront station are missing the covers. These covers prevent debris and trash from entering.

Hazard Rating: 1D



Photos



Photo 32: Standpipe missing protective covers.

Next Steps

Please respond **by Tuesday, January 20, 2026**, to acknowledge receipt and to convey responses to the WMSC regarding what, if any, actions will be or have been taken in response.