



WMSC Inspection Report 20260114C

ISSUED 1/20/2026

Inspection Details

Title: Dulles Rail Yard Service and Inspection Shop Inspection

Location: Dulles Rail Yard S&I (N99)

Date of Inspection: 1/14/2026

Time of Inspection: 1:10pm to 3:20pm

Unannounced

Non-Risk-Based

Functional Area: Vehicles

Hazard Rating: 3C

Overview

On January 14, 2026, a WMSC Inspector went to Dulles Rail Yard (N99) to conduct a routine unannounced inspection of the overall safety condition of the rail yard including yard facilities, yard track, and yard signals with a specific focus on the service and inspection (S&I) shop.

This is a non-risk-based inspection to evaluate the overall safety conditions of the Dulles Rail Yard and S&I Shop. The WMSC Inspector specifically looked at areas such as electrical systems, fire egress, life safety, fire detection, and fire suppression systems, among other potential hazards, within S&I shop.

After concluding the inspection, the WMSC Inspector conducted a debrief with the Metrorail Supervisor onsite in accordance with Program Standard Section 6.F.1.

Defects and Corrective Actions

WMSC Inspections identify safety issues that may be classified as defects, findings, or recommendations. Findings and recommendations are defined by Program Standard Section 5.E.2 and 5.E.3, respectively. Ordinarily, issues identified in a WMSC inspection report are classified as defects. Defects are specific safety issues of non-conformance/non-compliance that are identified, and that require remedial action.

This inspection did not identify any findings or recommendations and therefore does not require a WMSC Corrective Action Plan in accordance with Program Standard Section 5.E.4.



Defect Observations and Determinations

Positive Practices

There were many positive practices noted by the Inspector at Dulles (N99).

Specifically, all workers that were observed were wearing all appropriate personal protective equipment (PPE).

Power cables were covered and properly secured.

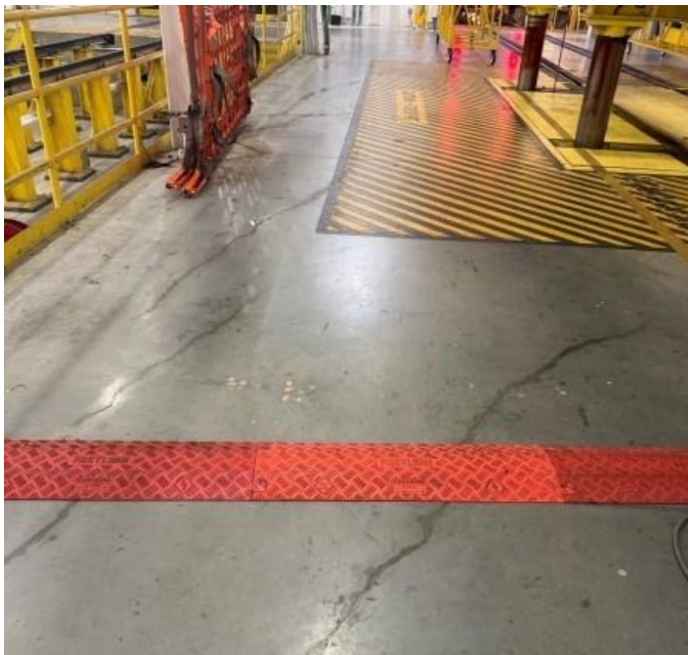


Photo 1: Power cables are orderly covered and protected.

Overall, the building was clean, neat, and well maintained.

Inspected eye wash stations were up to date and clean.

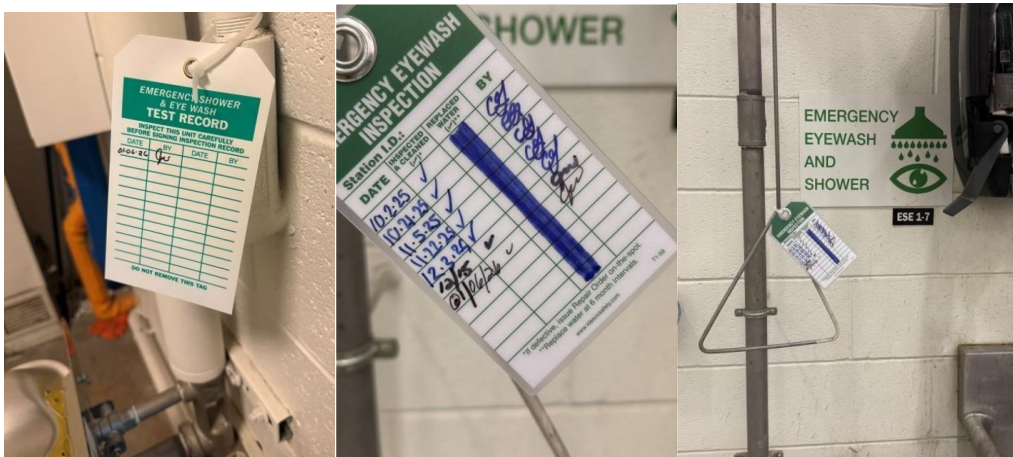


Photos 2: (left) and 3 (right): inspected and up-to-date eye wash stations.



WASHINGTON METRO RAIL SAFETY COMMISSION

The inspector notes that Dulles S&I has numerous plumbed eye wash and/or body decontamination stations.



Photos 4 (left), 5 (center), and 6 (right): Sophisticated eye and body decontamination systems. All up to date with inspections.

Two chemical labeling stations within the shop were complete with all available labels for printing for use on hazardous materials. There was evidence of positive use of the labeling machine because all pressure spray tanks and spray bottles, witnessed by the Inspector, were labeled correctly.



Photo 7 (left), 8 (center), and 9 (right): Functioning and properly used chemical labeling stations and an example of proper use of labeling identifying hazards of the chemicals contained therewithin.



The Battery Room is neat and orderly with eye wash station available.



Photo 10: Inspected Battery Room.

Defect 1 (mitigated)

A stinger emergency stop button was blocked by a movable cart. The Inspector mitigated the defect by moving the obstacle.

Hazard Rating: 1D

Photos:



Photo 11: A movable cart blocking the emergency button to stop stinger electrification.



Defect 2

The Inspector found that Periodic and Inspection task documents are not all up to date. The Inspector pulled one, 7k “A” inspection Task 30, and found that it was out of date; it was the 2024 version. The latest revision was Rev. 13.0 which was published November 2025. The Inspector conducted this one spot check and did not inspect all the PI task procedures onsite. It is critical that engineers work from the most recent and published PI task procedures.

The Periodic and Inspection (PI) cards outline rules and procedures for critical 7000-series train maintenance. Periodic inspections are performed to check on vehicle wear such as damaged equipment like collector assemblies, and shoes. Additionally, the periodic inspections assess safety systems that require calibrations such as brake rates. However, these PI documents should be reviewed for out-of-date materials. The use of outdated materials is a requirement of corrective action plan C-0271 which states, “Metrorail must establish and implement an effective process to review and update training materials on a regular basis as required, including ensuring there is communication when relevant procedures are updated, and that those updates are incorporated into all relevant training material.”

Hazard Rating: 2D

Photos

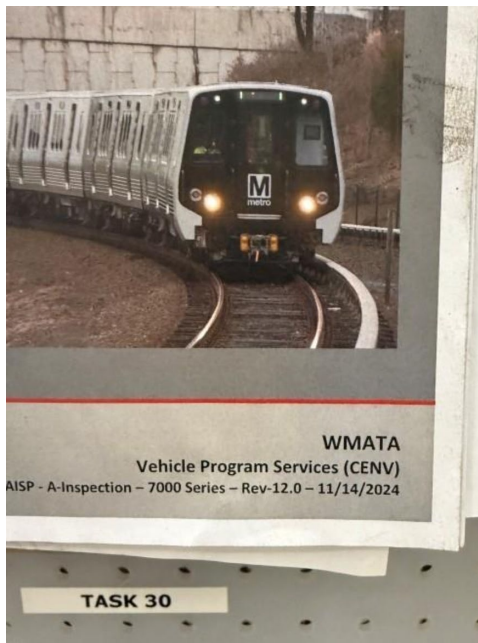


Photo 12: Metrorail Vehicle Program Services (CENV) A-Inspection – 7000 Series document is out of date. (Dated 11/14/2024) The current version (Rev. 13.0) was published on 11/24/25.

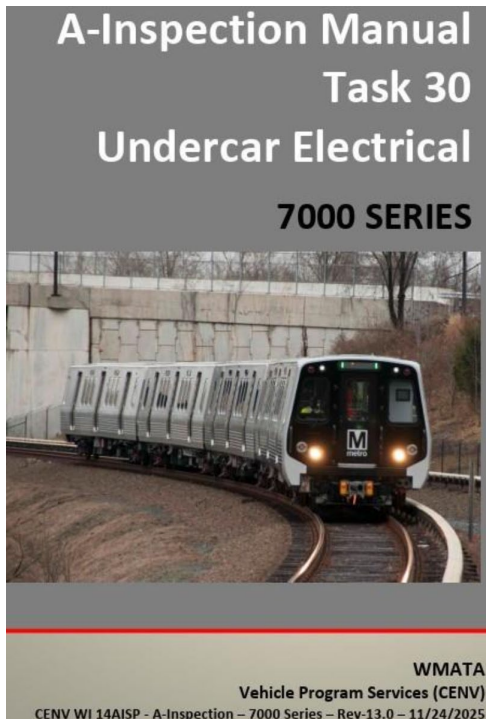


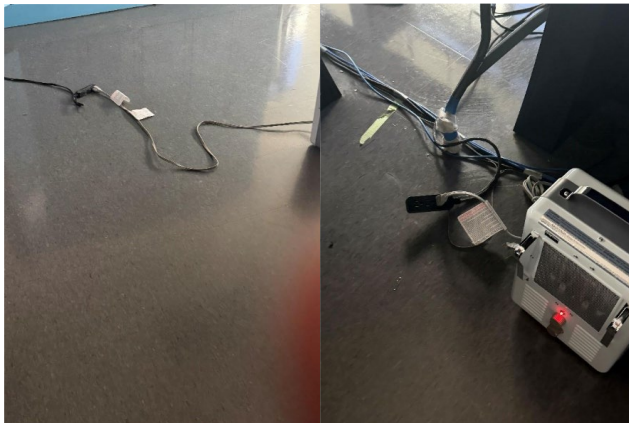
Photo 13: The current Metrorail Vehicle Program Services (CENV) A-Inspection – 7000 Series document which was not present with the “7K PI Procedures” documents at Dulles (N99). (Dated 11/24/2025)

Defect 3

The Inspector found a fire hazard in Yard Control Room N99F 213. Two portable heaters are plugged into extension cords, creating risk of electrical fire. Appliances must be plugged directly into the wall outlet per International Fire Code (IFC) 603.6.1.

Hazard Rating: 1D

Photos



Photos 14 (left) and 15 (right): portable heaters plugged into extension cords.



Defect 4

The Grease Room Double Door is damaged and not secure, including the Astragal.¹ The Grease Room contains flammable items, and the damaged door could lead to fire and/or smoke penetrating outside the Grease Room should there be a fire emergency. The broken, damaged, or missing door seals require immediate repair or replacement. (IFC NFPA 80)

Hazard Rating: 3D

Photos



Photos 16 (left) and 17 (right): Unsecured Grease Room double door.

Next Steps

Please respond **by Friday, January 23, 2026**, to acknowledge receipt and to convey responses to the WMSC regarding what, if any, actions will be or have been taken in response.

¹ An astragal is a type of door hardware to completely seal thin spaces between a pair of doors to seal gaps and contain smoke.